



ALICANTE



A New Victorville Neighborhood By Frontier Communities

Nestled on the Southwestern edge of the Mohave Desert in Victorville, Alicante is Frontier's newest community of single family homes.

Set in the splendor of the desert backdrop, Victorville has been the setting for many movies.

The area's four distinct seasons and moderate desert climate is home to the historic Route 66, Southern California Logistics Airport, Spring Valley Lake and the Victorville Film Archive.

Designed to complement the lifestyles of its culturally diverse homeowners, the spacious and flexible floor plans are set in a new home community that offers desirable indoor features with private and exceptionally large lots that will accommodate outdoor living and entertainment areas for family and friends.

A L I C A N T E

From the Mid \$400,000s



01

RESIDENCE
FLOORPLAN

1,733 Sq. Ft. | Two Story | 3 Bedroom | 2.5 Bath | Master Bedroom Suite | 2-Car Garage

1A



1B



1C

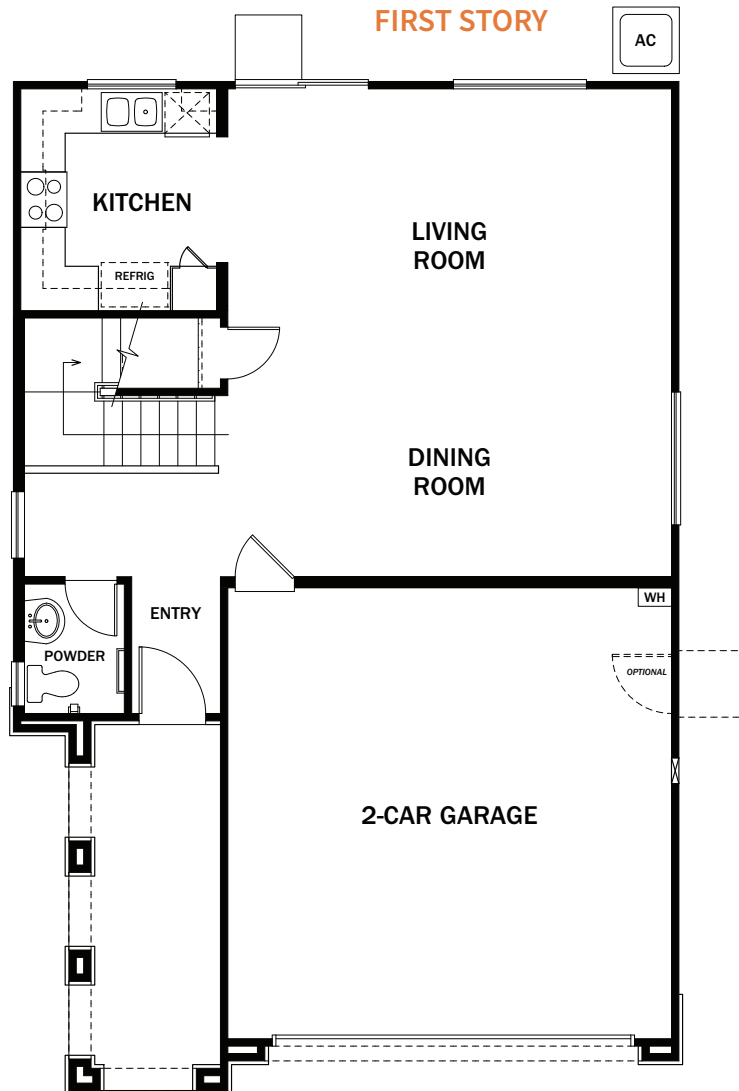


01

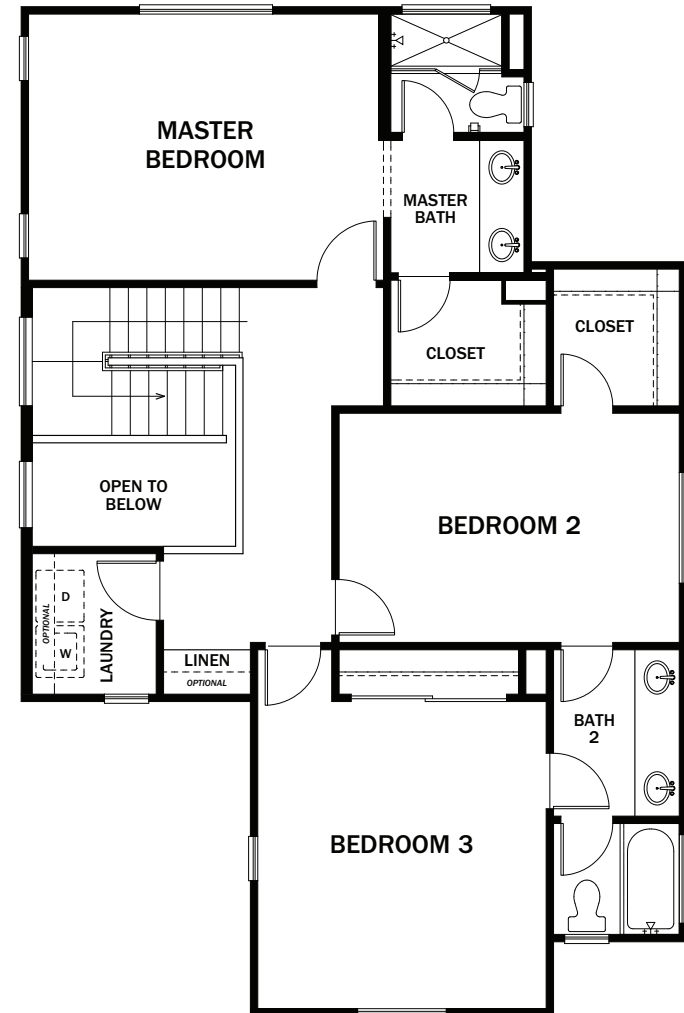
RESIDENCE
FLOORPLAN

1,733 Sq. Ft. | Two Story | 3 Bedroom | 2.5 Bath | Master Bedroom Suite | 2-Car Garage

FIRST STORY



SECOND STORY



02

RESIDENCE
FLOORPLAN

1,836 Sq. Ft. | Two Story | 2 Bedroom | 2.5 Bath | Master Bedroom Suite
Bonus Room | Den | 2-Car Garage

Options: Bedroom 3

2A



2B



2C

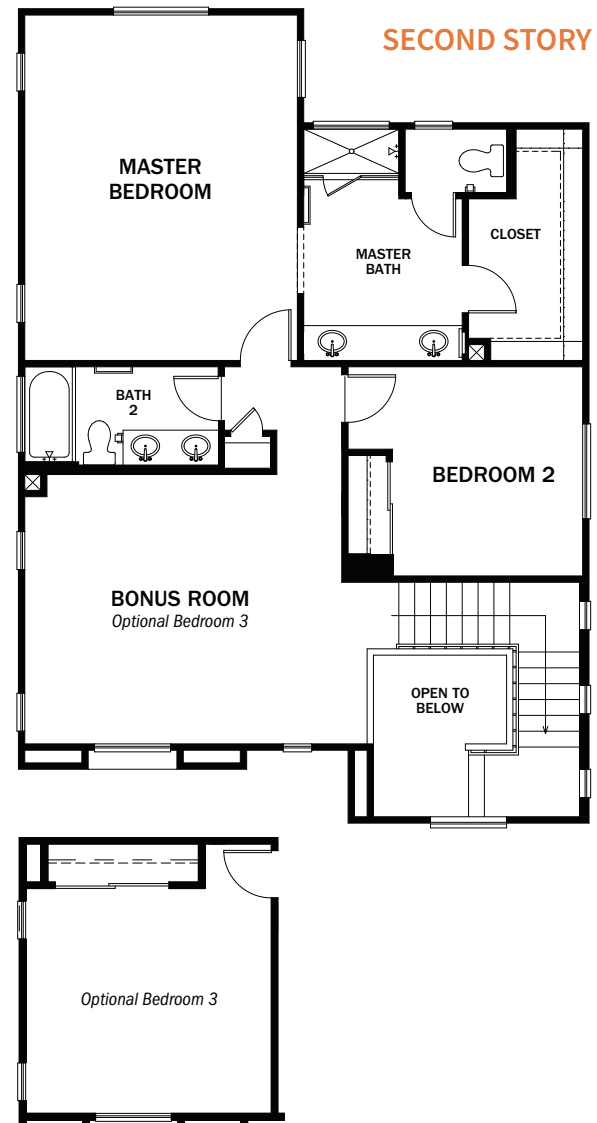
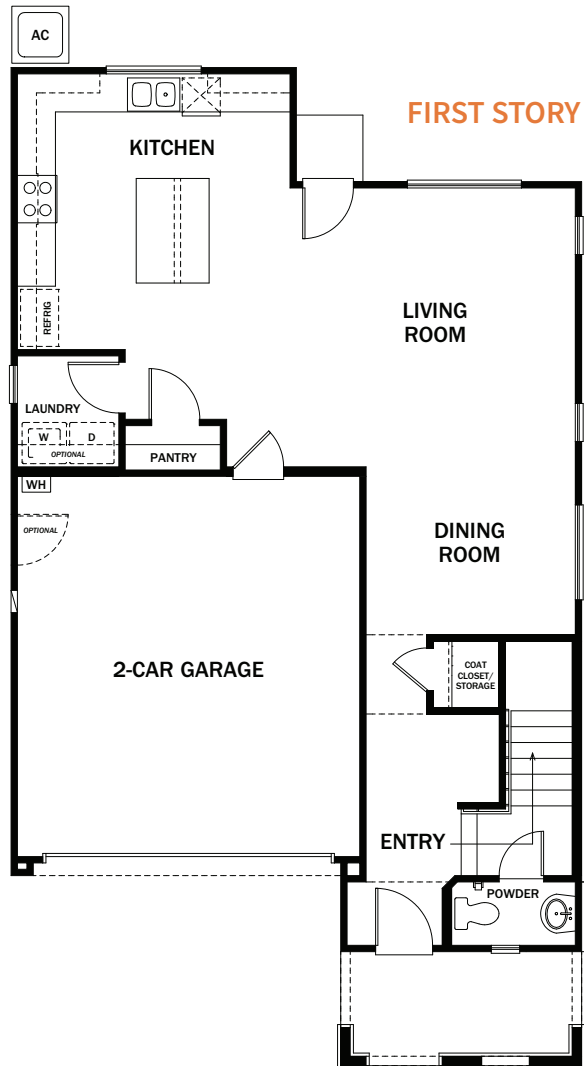


02

RESIDENCE FLOORPLAN

1,836 Sq. Ft. | Two Story | 2 Bedroom | 2.5 Bath | Master Bedroom Suite
Bonus Room | Den | 2-Car Garage

Options: Bedroom 3



03

RESIDENCE
FLOORPLAN

2,000 Sq. Ft. | Two Story | 3 Bedroom | 2.5 Bath | Master Bedroom Suite | Den | Loft |
2-Car Garage

Options: Bedroom 4 & Bath 3

3A



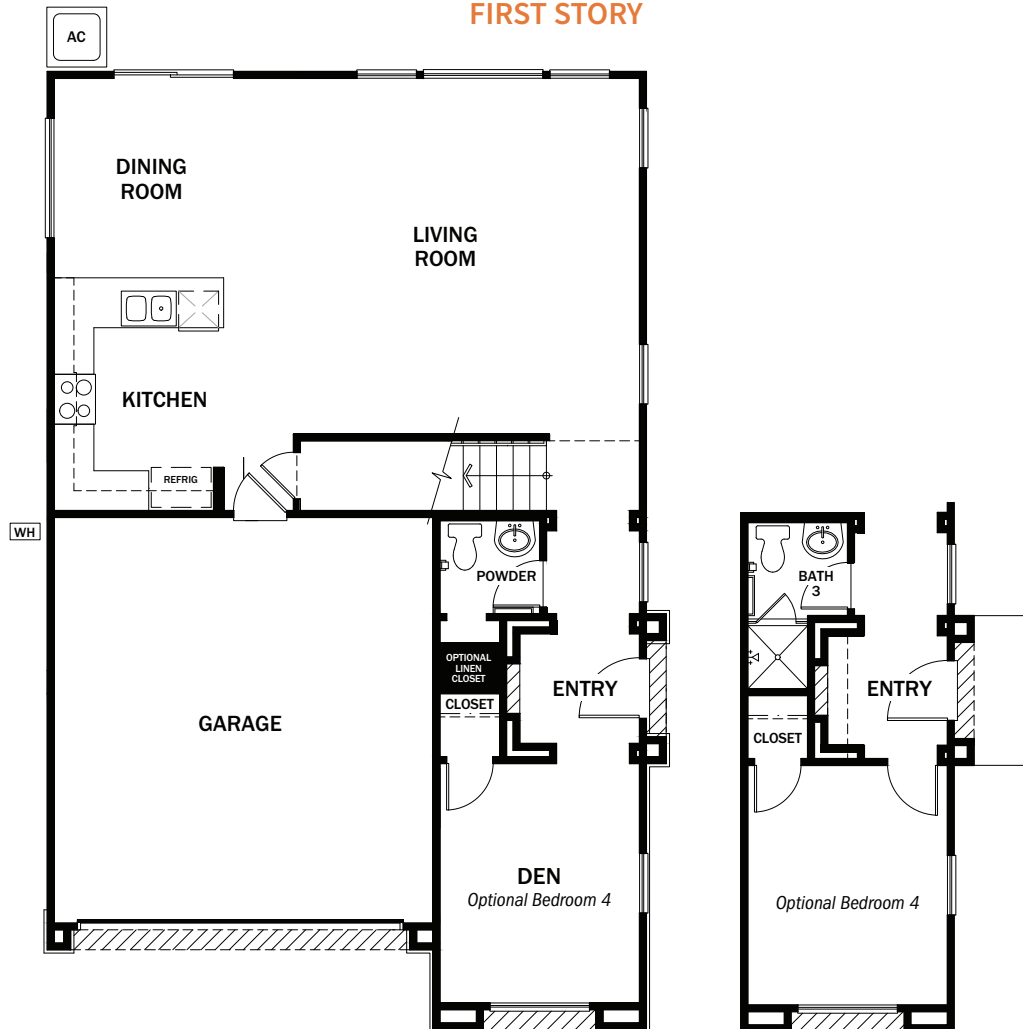
3B



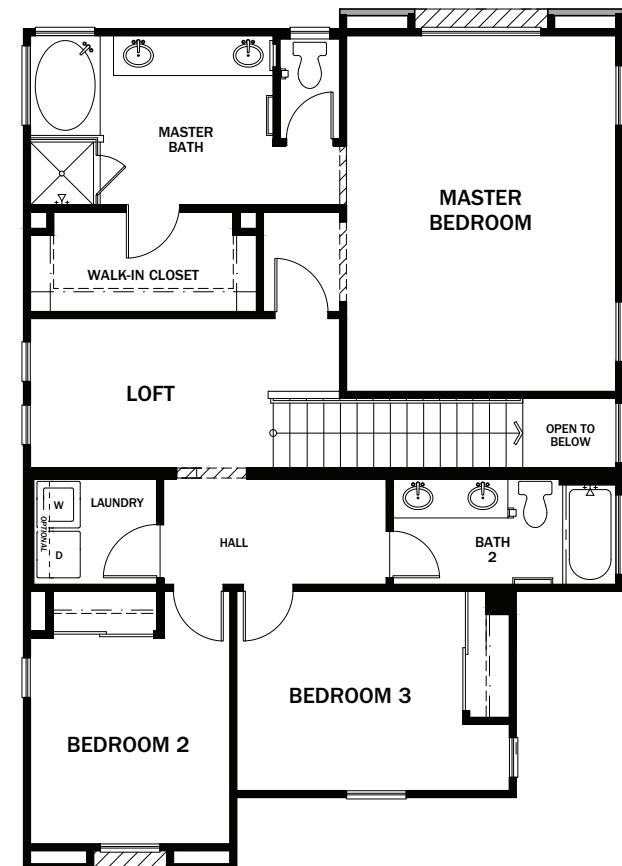
3C



FIRST STORY



SECOND STORY



04

RESIDENCE
FLOORPLAN

2,306 Sq. Ft. | Two Story | 3 Bedroom | 2.5 Bath | Master Bedroom Suite | Family Room
| Loft | 2-Car Garage

Options: Bedroom 4

4A



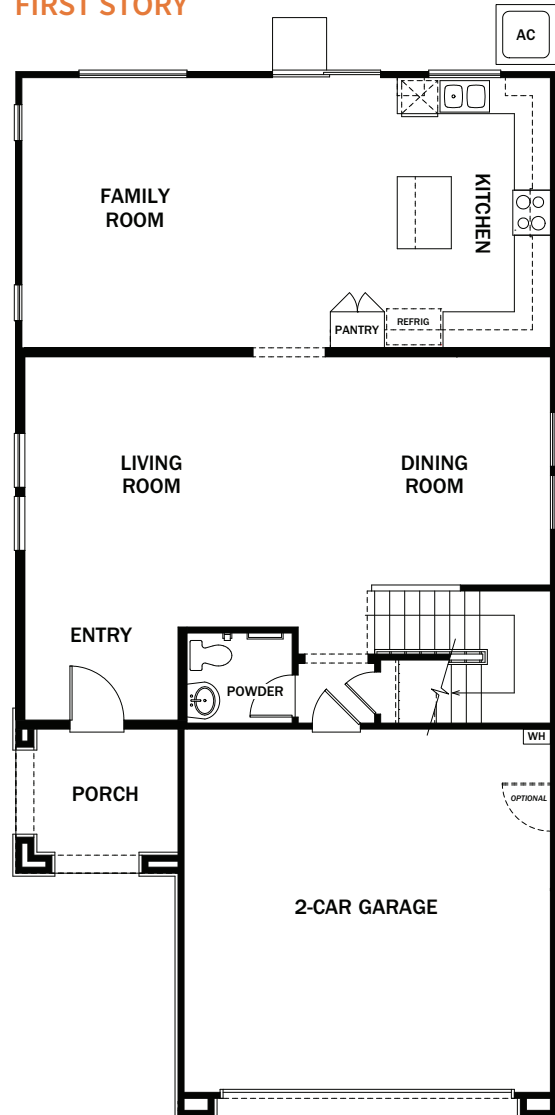
4B



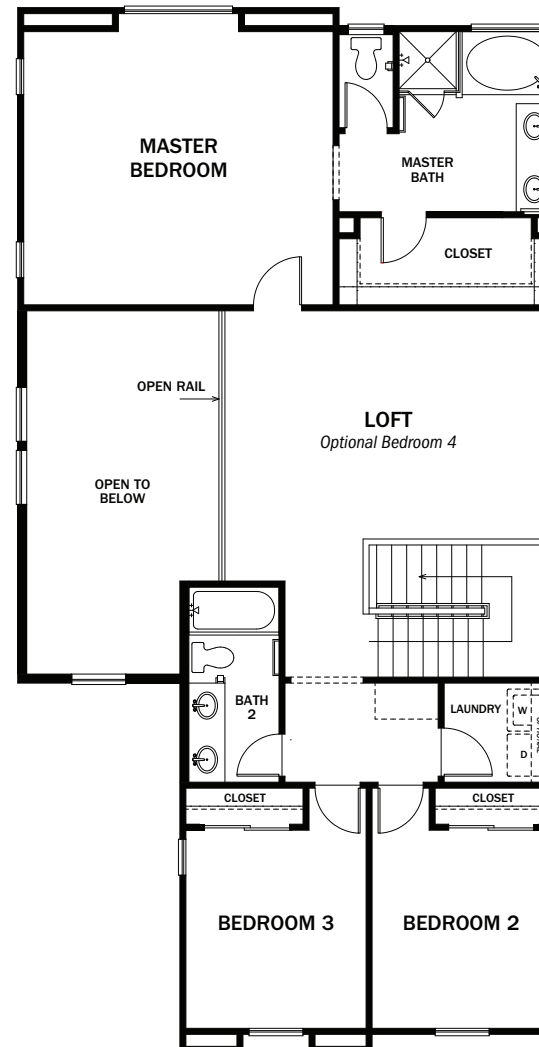
4C



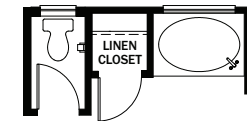
FIRST STORY



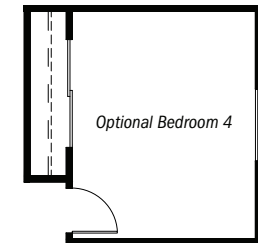
SECOND STORY



Optional Linen Closet



Optional Bedroom 4



05

RESIDENCE
FLOORPLAN

2,422 Sq. Ft. | Two Story | 3 Bedroom | 2.5 Bath | Master Bedroom Suite | Den | Loft |
2-Car Garage

Options: Bedroom 4, Bedroom 5 & Bath 3

5A



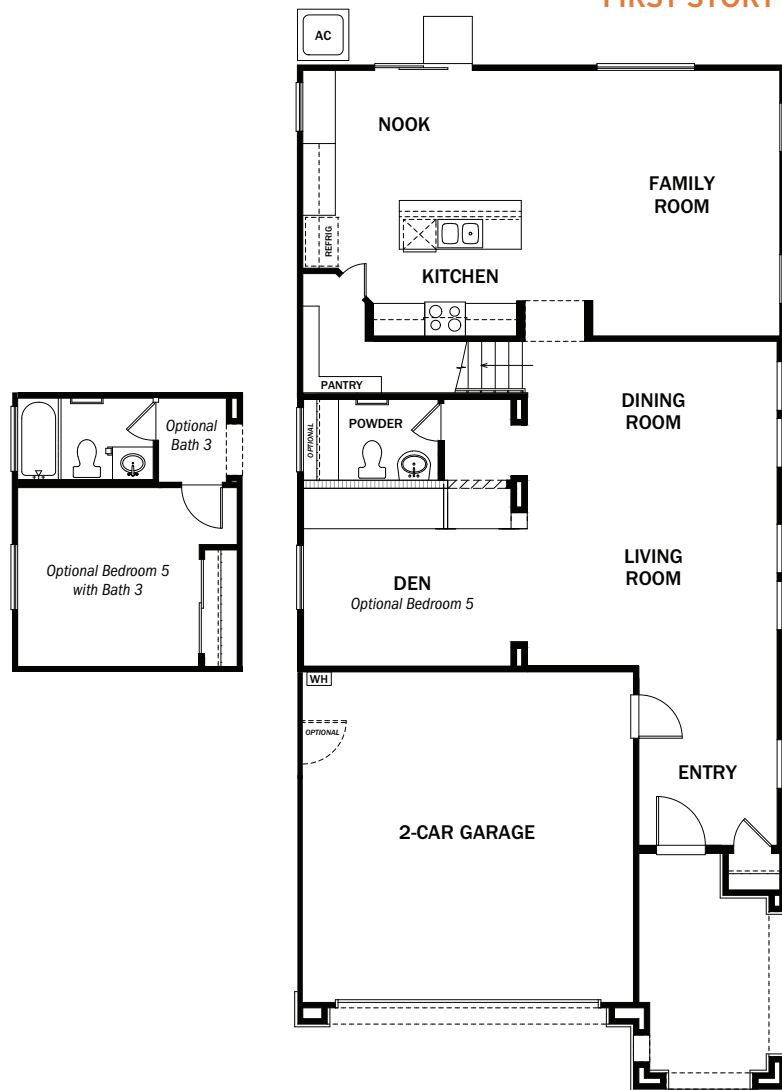
5B



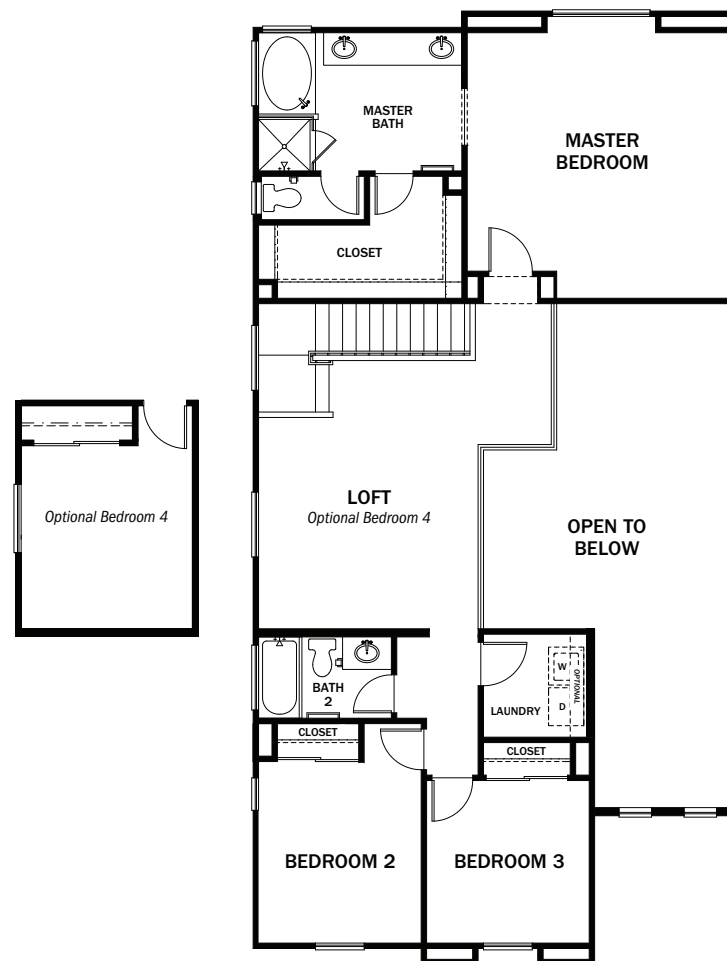
5C



FIRST STORY



SECOND STORY





DRAMATIC EXTERIORS

- Distinctive designs accented by stucco and stone (per plan)
- Designer coordinated exterior color and roof combinations
- Sectional roll-up garage doors with remote
- Front yard landscaping
- Block wall fencing & vinyl side yard gates

SPACIOUS INTERIORS

- National brand carpet in all living areas
- National brand vinyl flooring in kitchen, all bathrooms, and laundry room
- National brand tile at entry
- Expansive walk-in closet in master bedroom
- Ceiling mounted L.E.D. lights

HOME HIGHLIGHTS

- CAT-5 high speed-wiring for data and voice transmission at kitchen
- CATV cable television outlets in family room and master bedroom
- Concealed fire sprinkler system

BATH AREAS

- National brand fixtures in all bathrooms
- Fiberglass tubs and showers
- Elongated toilets
- Double sinks in the master bath
- Separate tub & shower in the master bath Plans 3, 4 & 5*

INVITING KITCHENS

- National brand stainless steel appliances including:
 - 30" gas range
 - Microwave and range hood combo
 - Multi-cycle dishwasher

- National brand faucet
- Single compartment stainless steel sink with 1/3 HP waste disposal system
- Granite slab countertops
- Kitchen Islands

ENERGY SAVING FEATURES

- Insulated exterior walls and ceilings that meet or exceed current California standards
- Centralized heating and air-conditioning system with a digital programmable thermostat
- Water saving plumbing fixtures
- Water saving tankless water heater
- Solar panels **

OPTIONAL FEATURES

- Cabinets in Linen and Laundry Room
- Garage man door
- Upgraded granite and quartz kitchen countertops
- Security system, home networking, home theater systems
- Room Options

* Per plan

** Ask for more details on purchase or lease programs.



ALICANTE

Sales Office Address:
12849 Echo Valley Street, Victorville, CA 92392
760-271-0599 | frontierhomes.com



FRONTIER COMMUNITIES

Prices, terms, availability, promotions, features, options, amenities, floor plans, elevations, designs, materials, square footages, associations fees (if any), and descriptions are subject to change without notice and may vary by unit and/or location. Persons and photos do not reflect racial preference and housing is open to all without regard to race, color, religion, sex, handicap, familial status, sexual orientation, or national origin. Depictions of homes or other features are artist conceptions including hardscape, landscape, and interior home decor and furnishings may be decorator suggestions that are not included in the purchase price of the house and availability of the same may vary. Seller reserves the right to make modifications, revisions and changes to house features, specifications, plans, elevations, and pricing without notice and/or obligation as Seller deems required, necessary, or desirable and in its sole and absolute discretion. Prices shown refer to the base house alone and specifically do not include any optional features, upgrades, lot premiums, upgraded exterior elevations, or association fees (if any). All square footages are approximate and may vary based on actual house construction, and Buyer should rely on his or her own evaluation of usable living area. Optional items may not be available depending on the stage of house construction. Please consult our sales team for more detailed and specific information regarding the above. California DRE License # 01916671

