





# THOUGHTFUL DESIGNS WITH MODERN TOUCHES FOR EVERYDAY LIVING

Located in the scenic town of Jurupa Valley next to Eastvale, Barrington Place North is an exciting lifestyle choice. Two-story homes with up to 4 bedrooms present open-flow floor plans with great rooms, dining and spacious kitchens perfect for entertaining. There are wonderful close-by opportunities to enjoy local year-round recreation and a central location provides easy freeway access to mountains, beaches and entertainment centers.

# 01

## RESIDENCE FLOORPLAN

1,838 Sq. Ft.

Two-Story

3 Bedrooms

2.5 Baths

Great Room

Master Suite

Porch

2-Car Garage



COTTAGE



ITALINATE



TUSCAN

# 01

## RESIDENCE FLOORPLAN

1,838 Sq. Ft.

Two-Story

3 Bedrooms

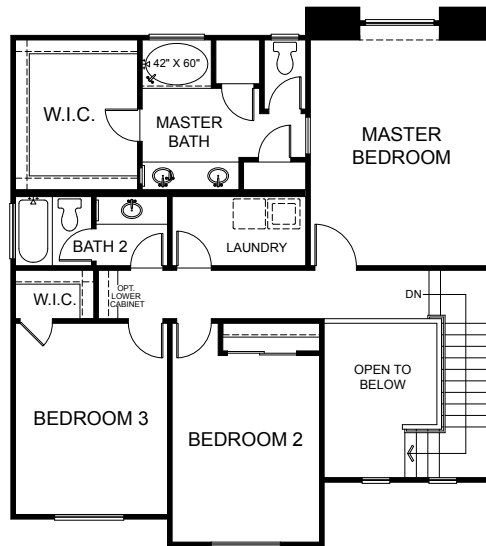
2.5 Baths

Great Room

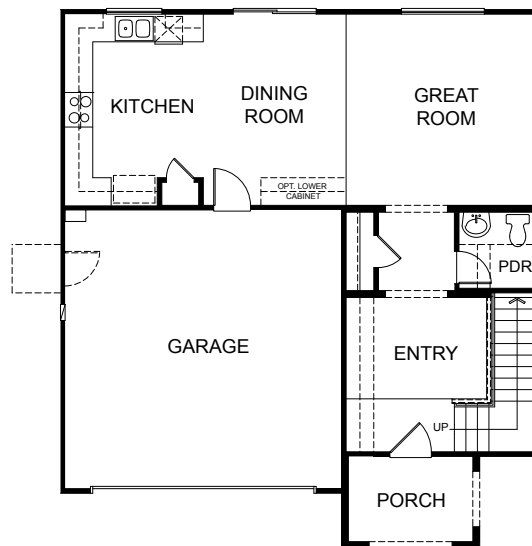
Master Suite

Porch

2-Car Garage



SECOND STORY



FIRST STORY

888-365-FRONTIER | [FrontierHomes.com](http://FrontierHomes.com)



 Prices, terms, availability, promotions, features, options, amenities, floor plans, elevations, designs, materials, square footages, associations fees(if any), and descriptions are subject to change without notice and may vary by unit and/ or location. Seller reserves the right to make modifications, revision and changes to features, specifications, plans, elevations, and pricing without notice and/ or obligation as it deems desirable its sole and absolute discretion. Prices shown refer to the base house and do not include any optional features, upgrades, lot premiums, upgraded exterior elevations, or association fees. Square footages are approximate and may vary in construction. Optional items may not be available depending on stage of construction. California BRE License # 01916671 Effective 2/19/2019.

# 02

## RESIDENCE FLOORPLAN



2A



COTTAGE

2B



ITALINATE

2C



CRAFTSMAN

1,948 Sq. Ft.

Two-Story

3 Bedrooms

2.5 Baths

Great Room

Master Suite

Den

Porch

2-Car Garage

.....

Options:

Bedroom 4

Bath 3

# 02

## RESIDENCE FLOORPLAN

1,948 Sq. Ft.

Two-Story

3 Bedrooms

2.5 Baths

Great Room

Master Suite

Den

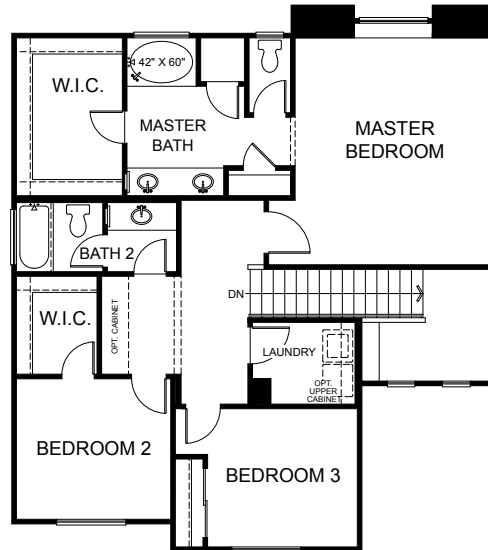
Porch

2-Car Garage

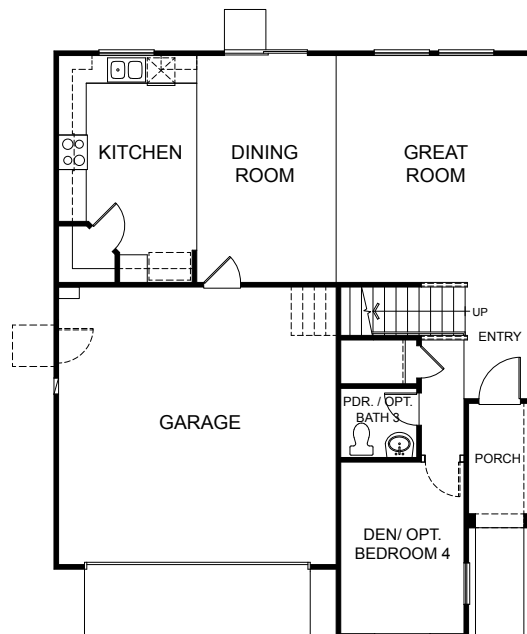
Options:

Bedroom 4

Bath 3



SECOND STORY



FIRST STORY

888-365-FRONTIER | [FrontierHomes.com](http://FrontierHomes.com)



 Prices, terms, availability, promotions, features, options, amenities, floor plans, elevations, designs, materials, square footages, associations fees(if any), and descriptions are subject to change without notice and may vary by unit and/ or location. Seller reserves the right to make modifications, revision and changes to features, specifications, plans, elevations, and pricing without notice and/ or obligation as it deems desirable its sole and absolute discretion. Prices shown refer to the base house and do not include any optional features, upgrades, lot premiums, upgraded exterior elevations, or association fees. Square footages are approximate and may vary in construction. Optional items may not be available depending on stage of construction. California BRE License # 01916671 Effective 2/19/2019.

# 03

## RESIDENCE FLOORPLAN

### Elevation A &B

2,071 Sq. Ft.

### Elevation C

2,127 Sq. Ft.

Two-Story

3 Bedrooms

2.5 Baths

Great Room

Den

Porch

2-Car Garage

.....

Options:

Bedroom 4

Bath 3



COTTAGE



ITALINATE



MONTEREY

# 03

## RESIDENCE FLOORPLAN

### Elevation A & B

2,071 Sq. Ft.

### Elevation C

2,127 Sq. Ft.

Two-Story

3 Bedrooms

2.5 Baths

Great Room

Den

Porch

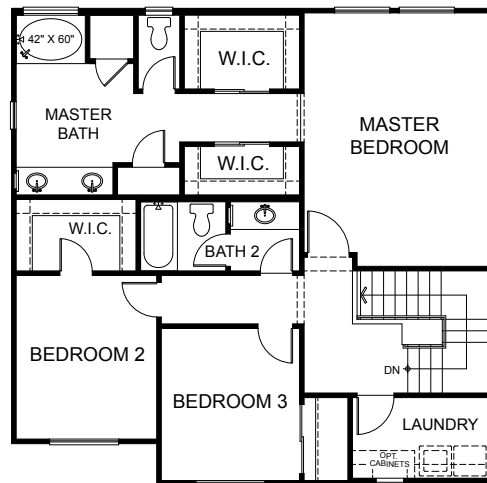
2-Car Garage

.....

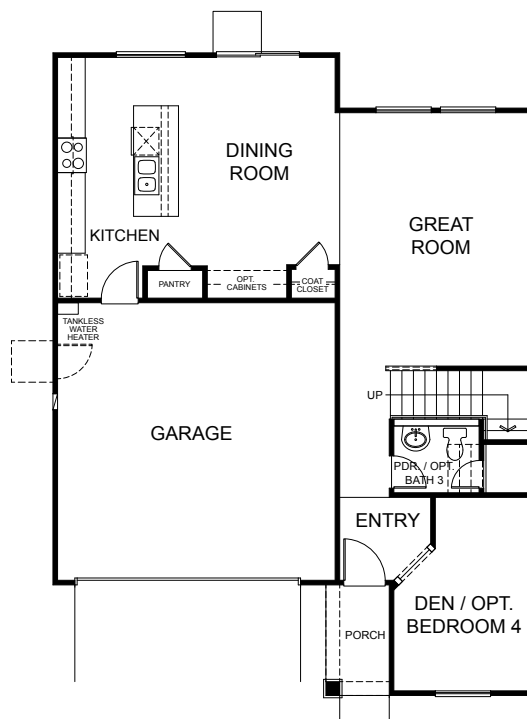
Options:

Bedroom 4

Bath 3



SECOND STORY



FIRST STORY

888-365-FRONTIER | FrontierHomes.com



 Prices, terms, availability, promotions, features, options, amenities, floor plans, elevations, designs, materials, square footages, associations fees(if any), and descriptions are subject to change without notice and may vary by unit and/ or location. Seller reserves the right to make modifications, revision and changes to features, specifications, plans, elevations, and pricing without notice and/ or obligation as it deems desirable its sole and absolute discretion. Prices shown refer to the base house and do not include any optional features, upgrades, lot premiums, upgraded exterior elevations, or association fees. Square footages are approximate and may vary in construction. Optional items may not be available depending on stage of construction. California BRE License # 01916671 Effective 2/19/2019.

# 07

## RESIDENCE FLOORPLAN

2,238 Sq. Ft.

Two-Story

3 Bedrooms

2.5 to 3 Baths

Living Room

Master Suite

Nook

Loft

Porch

2-Car Garage

.....

Option:

Bedroom 4



COTTAGE



ITALINATE



CRAFTSMAN

# 07

## RESIDENCE FLOORPLAN

2,238 Sq. Ft.

Two-Story

3 Bedrooms

2.5 to 3 Baths

Living Room

Master Suite

Nook

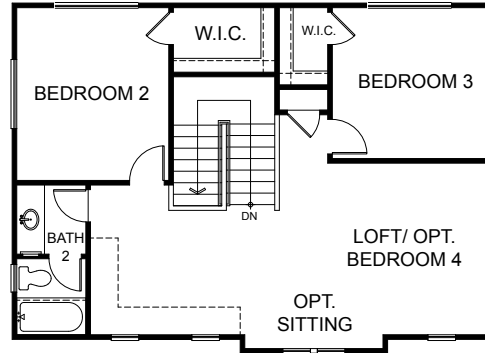
Loft

Porch

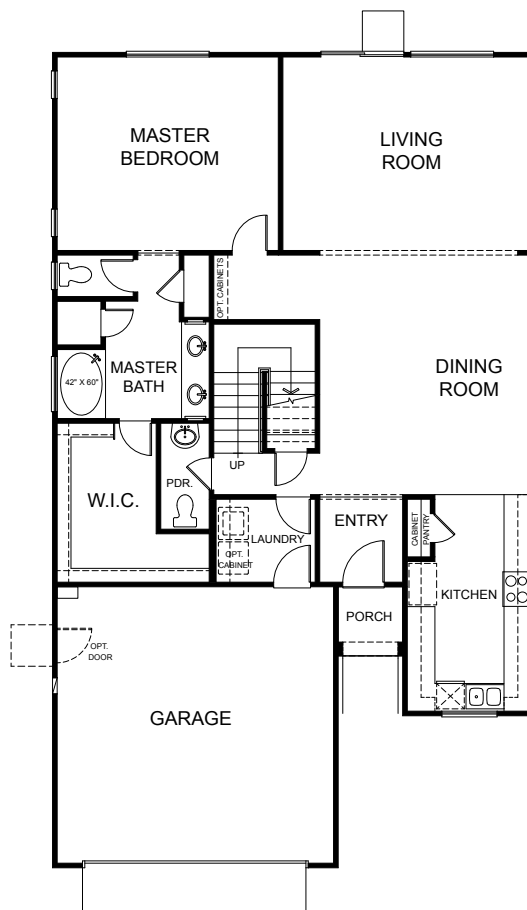
2-Car Garage

Option:

Bedroom 4



SECOND STORY



FIRST STORY

888-365-FRONTIER | FrontierHomes.com



 Prices, terms, availability, promotions, features, options, amenities, floor plans, elevations, designs, materials, square footages, associations fees(if any), and descriptions are subject to change without notice and may vary by unit and/ or location. Seller reserves the right to make modifications, revision and changes to features, specifications, plans, elevations, and pricing without notice and/ or obligation as it deems desirable its sole and absolute discretion. Prices shown refer to the base house and do not include any optional features, upgrades, lot premiums, upgraded exterior elevations, or association fees. Square footages are approximate and may vary in construction. Optional items may not be available depending on stage of construction. California BRE License # 01916671 Effective 2/19/2019.



## BARRINGTON PLACE - North -

4683 Prairie Run Road  
Jurupa Valley, CA 91752

**951.441.4700**

Sales Tour Daily: 9:30 am to 5 pm  
Wed: Call for Availability



**FRONTIERHOMES.COM**



2-19-19 Prices, terms, availability, promotions, features, options, amenities, floor plans, elevations, designs, materials, square footages, association fees (if any) and descriptions are subject to change without notice and may vary by unit and/or location. Seller reserves the right to make modifications, revisions and changes to features, specifications, plans, elevations and pricing without notice and or obligation as it deems desirable in its sole and absolute discretion. Prices shown refer to the base house and do not include any optional features, upgrades, lot premiums, upgraded exterior elevations, or association fees. Square footages are approximate and may vary in construction. Optional items may not be available, depending on stage of construction.

All Real Estate advertised is subject to the Fair Housing Act, which prohibits discrimination in the sale, rental and financing of housing related transactions based on race, color, national origin, religion, sex, familial status or disability. If you think your rights have been violated, the Housing Discrimination Complaint Form is available at [www.hud.gov](http://www.hud.gov) or call HUD office toll free at (800) 347-3739. All renderings, floor plans and maps are artist conceptions and are not intended to be an actual depiction of the homes, fencing, walks, driveways or landscaping, and are not necessarily to scale. Buyer shall verify all information before close of escrow. Frontier Brokers, Inc. is the real estate brokerage, California BRE License #01916671.