




Brookhaven
SOUTH



WELCOME TO BROOKHAVEN

– Frontier Communities newest neighborhood in Palmdale!

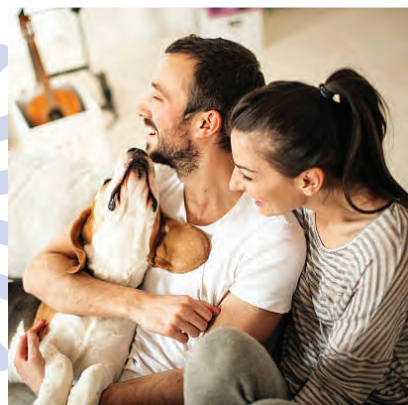
Set against the beautiful High Desert scenery of the area, Brookhaven's Palmdale location is rich with nearby parks and trails that celebrate the mountain/desert terrain and wildlife landscape.

Grounded in its agricultural roots and being the home of many aerospace industries, Palmdale sits against the majestic San Gabriel Mountains which divide it from Los Angeles Basin.

Outdoor and indoor activities are available to residents year-round for adults and children alike who are always busy enjoying life. Shopping at the Antelope Valley Mall in any one of its trendy stores, picnicking in Littlerock Dam and Recreation area or sliding down peaks at Mountain High Ski Resort, locals can be found at the Mulligan Family Fun Center, Tippi Hedren's Shambala Preserve or Rancho Vista Golf Course.

Designed to complement the lifestyles of its culturally diverse homeowners, each Brookhaven home celebrates gathering spaces for family and friends and flexible floor plans to meet the needs of each homebuyer.

Brookhaven South is proud to be a part of a city that welcomes you with **“a place to call home ...”**

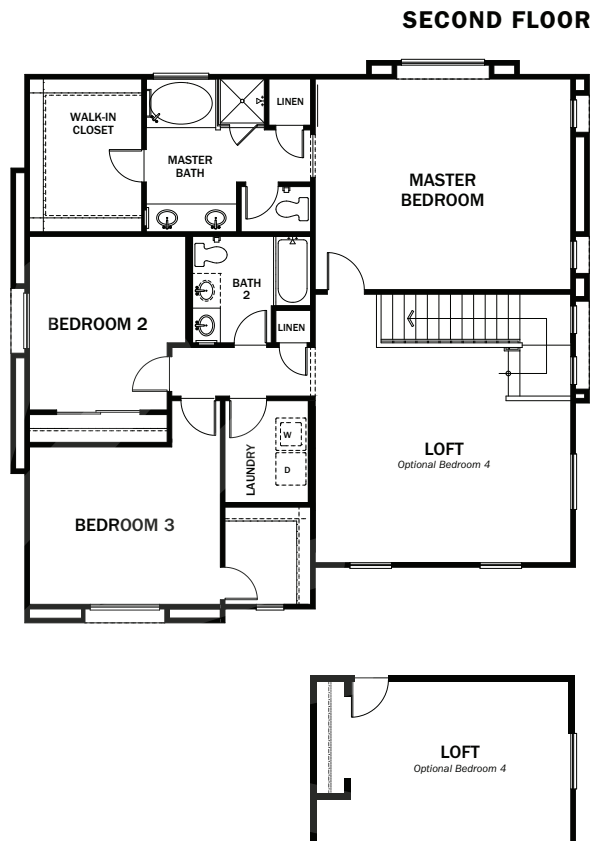
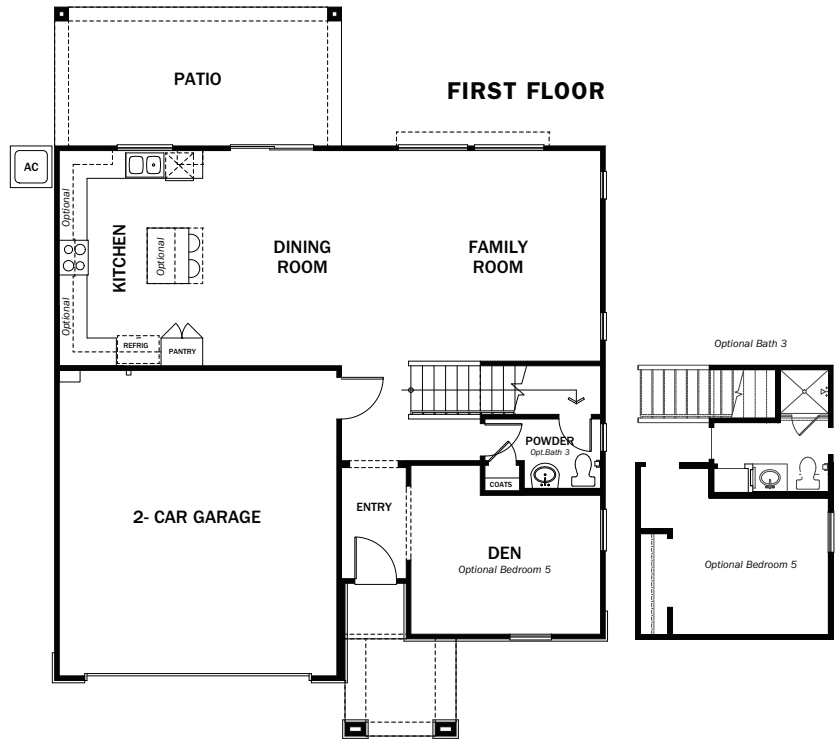


01 | RESIDENCE FLOORPLAN

Two-Story Floor Plan
 2,398 Sq. Ft
 3 Bedrooms
 2.5 Baths
 Master Bedroom Suite
 Loft
 Den
 2-Car Garage

OPTIONS:

Bedroom 4
 Bedroom 5 & Bath 3



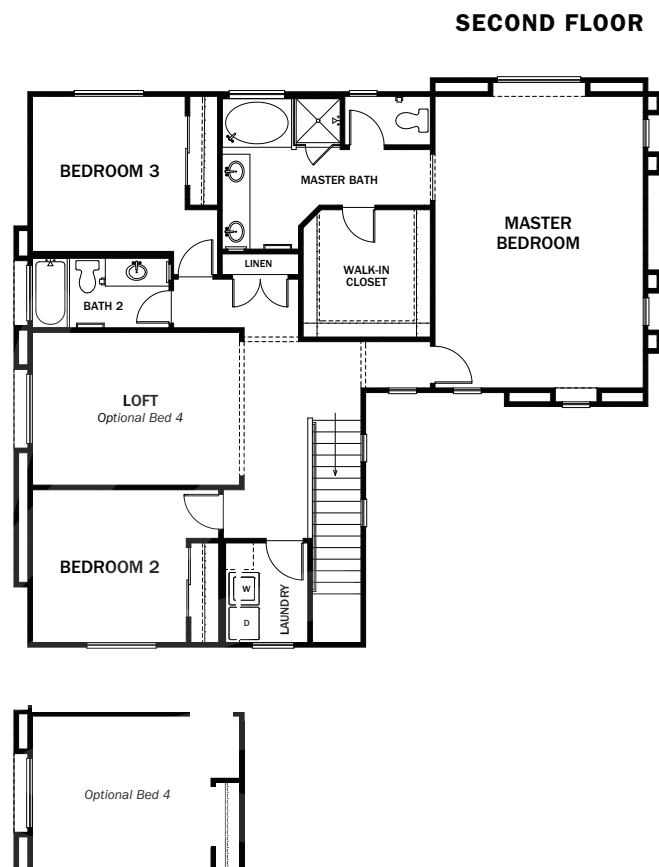
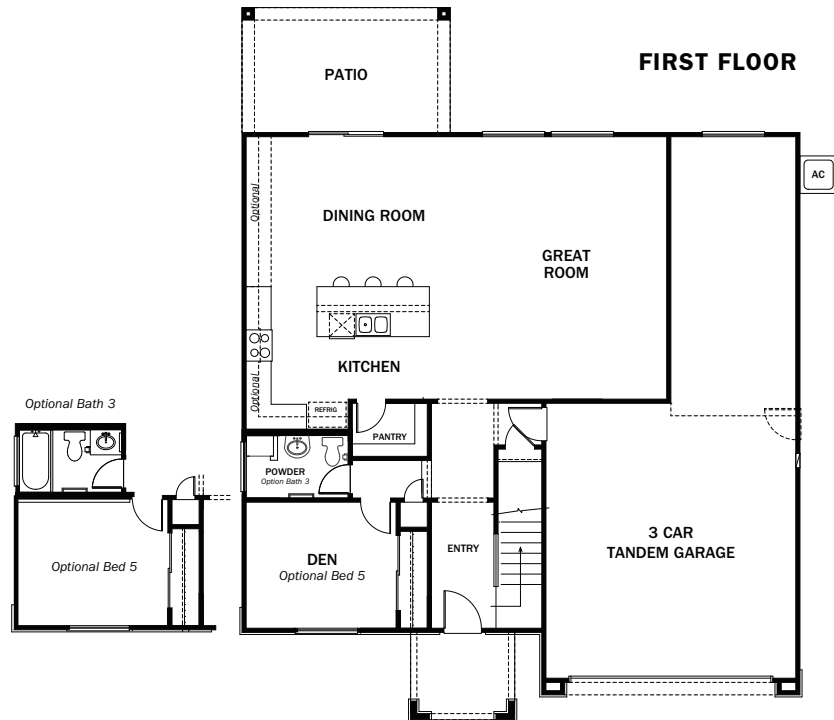
02 | RESIDENCE FLOORPLAN

Two-Story Floor Plan
 2,541 Sq. Ft
 3 Bedrooms
 2.5 Baths
 Master Bedroom Suite
 Loft
 Den
 3-Car Tandem Garage

OPTIONS:

Bedroom 4

Bedroom 5 & Bath 3



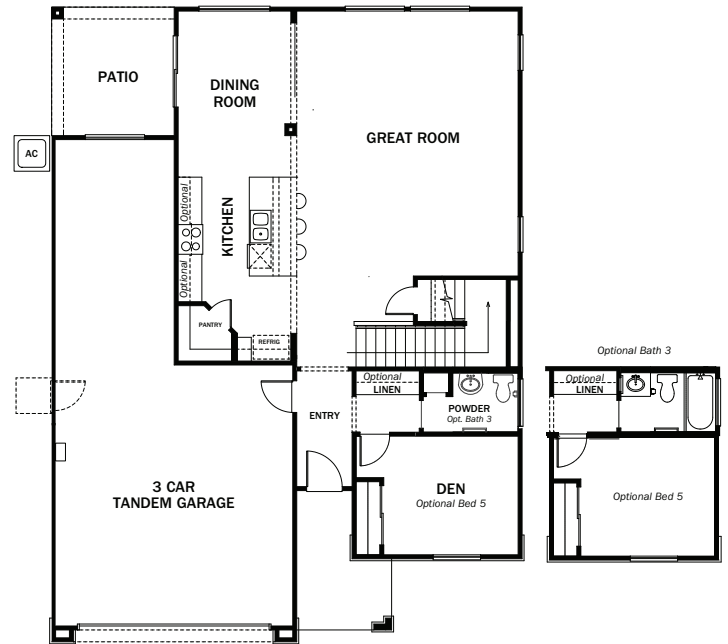
03 | RESIDENCE FLOORPLAN

Two-Story Floor Plan
 2,697 Sq. Ft
 3 Bedrooms
 2.5 Baths
 Master Bedroom Suite
 Loft
 Den
 3-Car Tandem Garage

OPTIONS:

Bedroom 4
 Bedroom 5 & Bath 3

FIRST FLOOR



SECOND FLOOR





Sales Office Address
38258 Chapelle St.
Palmdale, CA 93552

(661) 440-3327



FRONTIER COMMUNITIES

