

DIAMOND *R*IDGE





QUALITY-CRAFTED NEW HOMES HIGHLIGHT THE FRESHNESS OF MODERN LIVING

A multitude of choices in home designs and architectural styles make Diamond Ridge a must see. Great rooms, large kitchens and extra bedroom/flex room options all combine to create perfect individual and entertaining spaces for living your way. Set on large lots, homes include either a 2-car garage, or 3- car tandem garage. The excellent location near Mesa Linda Park offers the Mojave Desert as your playground, along with Victorville's great parks, shopping and entertainment scene.

01

RESIDENCE FLOORPLAN

2,017 Sq. Ft.

One-Story

3 Bedrooms

2 Baths

Den

2-Car Garage

Options:

Bedroom 4

Master Bath with
Shower

Patio Options

DIAMOND *R*IDGE

1A



SPANISH

1B



COTTAGE

1C



CRAFTSMAN

2,017 Sq. Ft.

One-Story

3 Bedrooms

2 Baths

Den

2-Car Garage

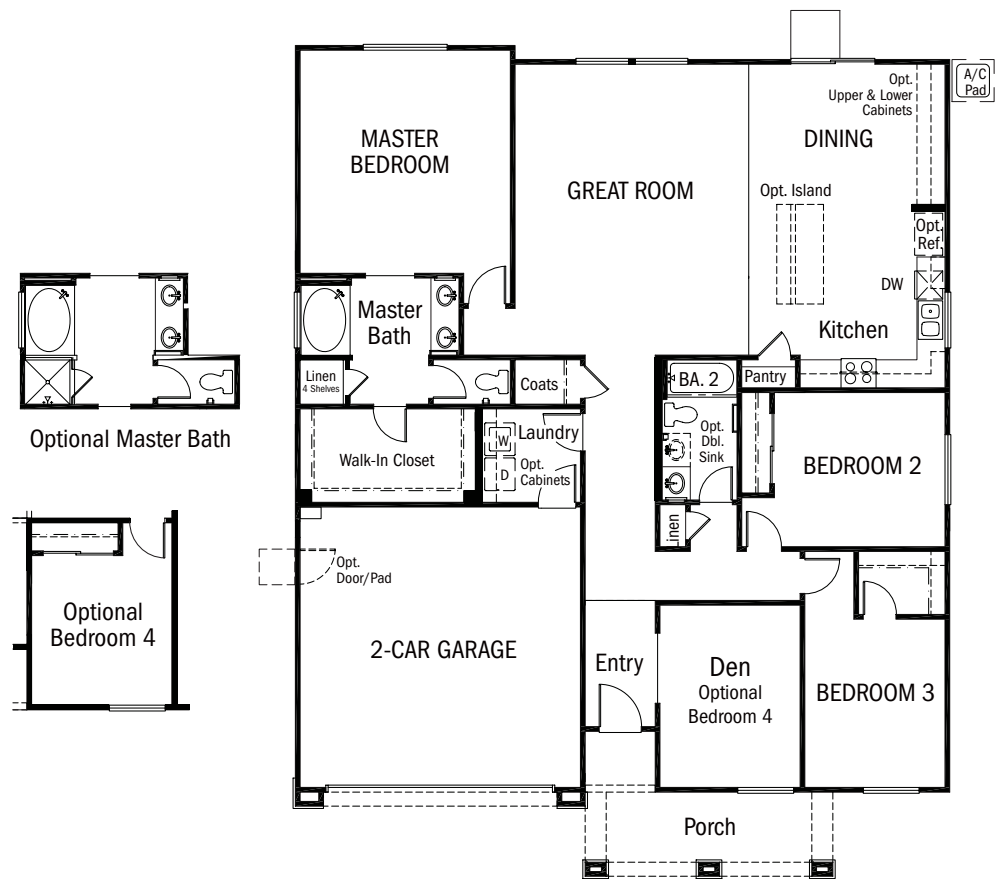
Options:

Bedroom 4

Master Bath with
Shower

Patio Options

SINGLE STORY



02

RESIDENCE FLOORPLAN

2,356 Sq. Ft.

Two-Story

3 Bedrooms

2.5 Baths

Den

Loft

2-Car Garage

Options:

Bedroom 4

Bedroom 5/Bath 3

Master Bath with
Shower

Patio Options

DIAMOND *R*IDGE

2A



SPANISH

2B



COTTAGE

2C



CRAFTSMAN

02

RESIDENCE FLOORPLAN

2,356 Sq. Ft.

Two-Story

3 Bedrooms

2.5 Baths

Den

Loft

2-Car Garage

Options:

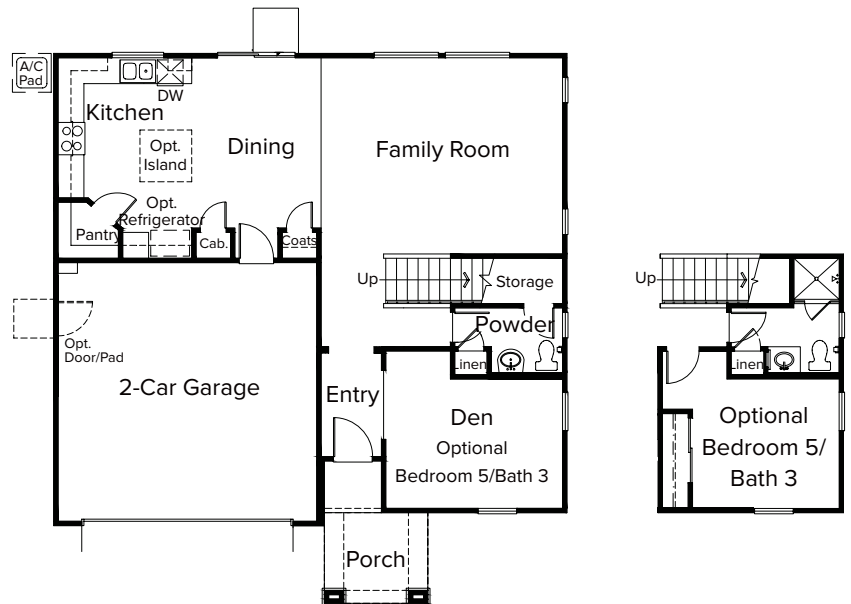
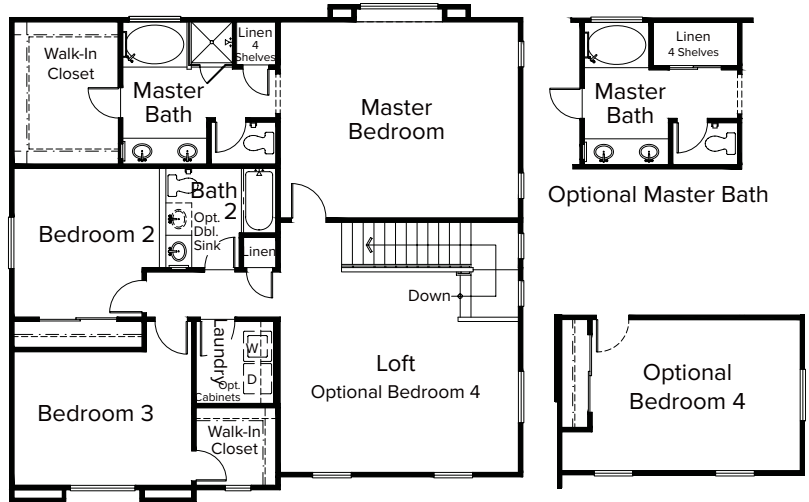
Bedroom 4

Bedroom 5/Bath 3

Master Bath with
Shower

Patio Options

DIAMOND *R*IDGE



03

RESIDENCE FLOORPLAN

2,541 Sq. Ft.

Two-Story

3 Bedrooms

2.5 Baths

Den

Loft

Porch

3-Tandem

Car Garage

.....

Option:

Bedroom 4

Bedroom 5/Bath 3

Bedroom 6/Bath 4

Adds 224

Livable Sq. Ft.

OR

Super Great Room

Adds 224

Livable Sq. Ft.

Patio Options

DIAMOND *R*IDGE

3A



SPANISH

3B



COTTAGE

3C



CRAFTSMAN

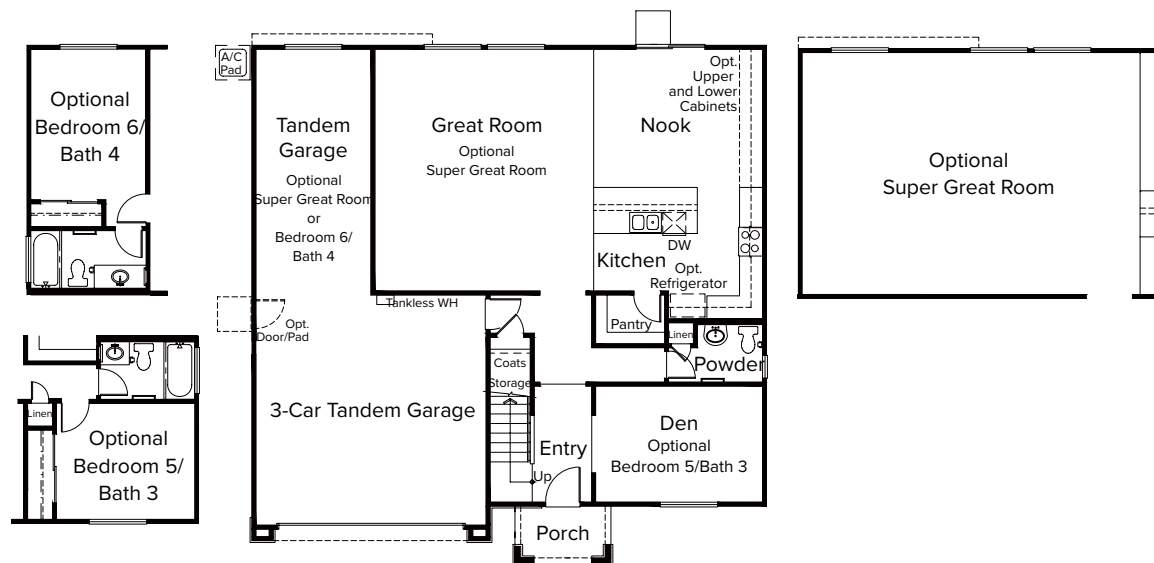
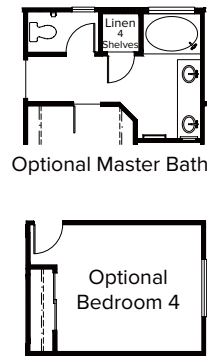
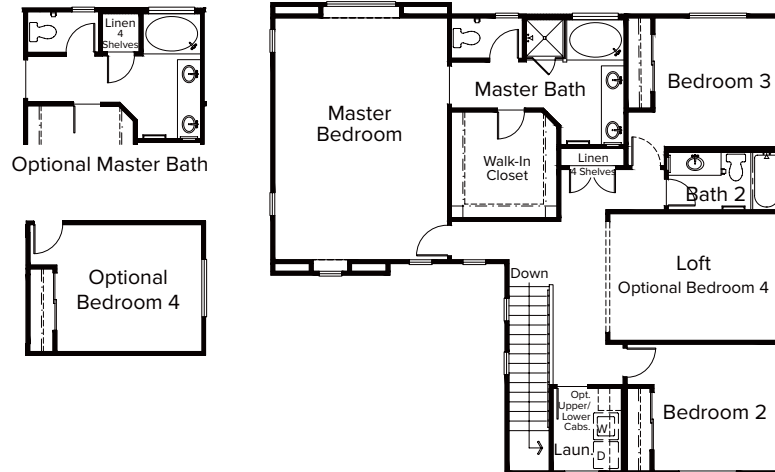
03

RESIDENCE FLOORPLAN

DIAMOND *R*IDGE

2,541 Sq. Ft.
Two-Story
3 Bedrooms
2.5 to 3 Baths
Den
Loft
Porch
3-Tandem
Car Garage

Option:
Bedroom 4
Bedroom 5/Bath 3
Bedroom 6/Bath 4
Adds 224
Livable Sq. Ft.
OR
Super Great Room
Adds 224
Livable Sq. Ft.
Patio Options



04

RESIDENCE FLOORPLAN

2,708 Sq. Ft.

Two-Story

3 Bedrooms

2.5 Baths

Den

Loft

3-Tandem

Car Garage

.....

Option:

Bedroom 4

Bedroom 5/Bath 3

Bedroom 6/Bath 4

Adds 210

Livable Sq. Ft.

OR

Bonus Room

Adds 210

Livable Sq. Ft.

Master Bath

with Shower

Patio Options

DIAMOND *R*IDGE

4A



SPANISH

4B



COTTAGE

4C



CRAFTSMAN

04

RESIDENCE FLOORPLAN

2,708 Sq. Ft.

Two-Story

3 Bedrooms

2.5 Baths

Den

Loft

3-Tandem

Car Garage

Option:

Bedroom 4

Bedroom 5/Bath 3

Bedroom 6/Bath 4

Adds 210

Livable Sq. Ft.

OR

Bonus Room

Adds 210

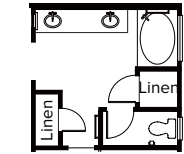
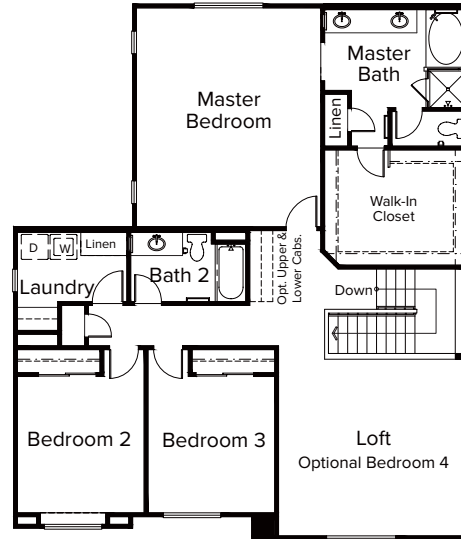
Livable Sq. Ft.

Master Bath

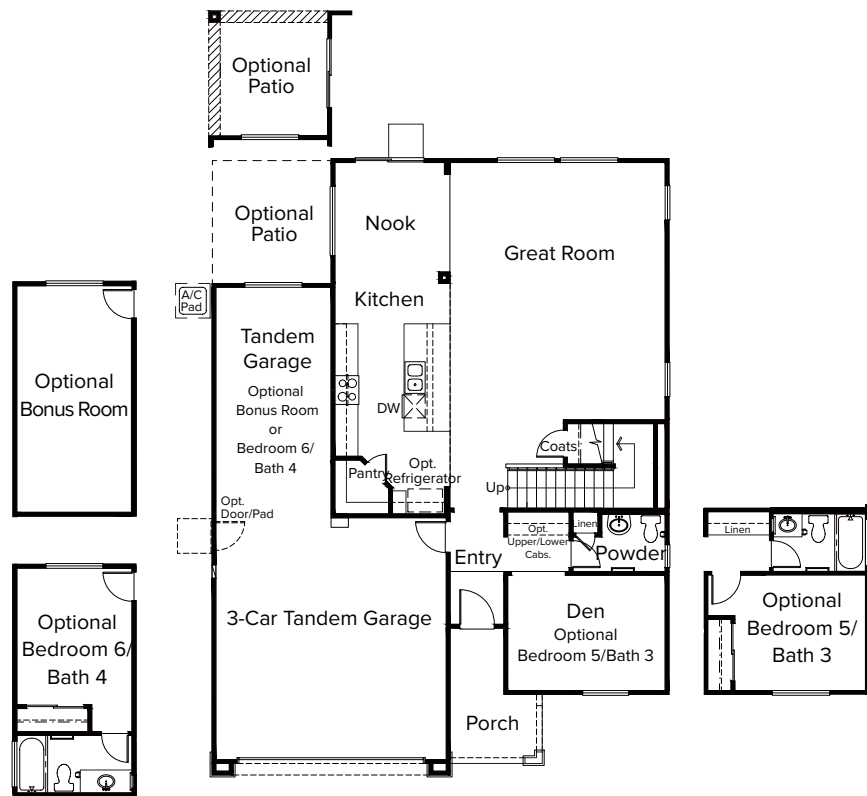
with Shower

Patio Options

DIAMOND *R*IDGE



Optional Master Bath



FEATURES

DRAMATIC EXTERIORS

- Distinctive designs accented by stucco and stone (per plan)
- Designer coordinated exterior color and roof combinations
- Sectional roll-up garage doors with remote
- Front yard landscaping
- Block wall fencing & vinyl side yard gates

SPACIOUS INTERIORS

- National brand carpet in all living areas
- National brand vinyl flooring in kitchen, all bathrooms, and laundry room
- National brand tile at entry
- Expansive walk-in closet in master bedroom
- Ceiling mounted L.E.D. lights

HOME HIGHLIGHTS

- CAT-5 high speed-wiring for data and voice transmission at kitchen
- CATV cable television outlets in family room and master bedroom
- Concealed fire sprinkler system

BATH AREAS

- National brand fixtures in all bathrooms
- Fiberglass tubs and showers
- Elongated toilets
- Double sinks in the master bath

INVITING KITCHENS

- National brand stainless steel appliances including:
 - 30" gas range
 - Microwave and range hood combo
 - Multi-cycle dishwasher
- National brand faucet
- Single basin stainless steel sink with 1/3 HP waste disposal system
- Granite slab countertops
- Kitchen islands*

ENERGY SAVING FEATURES

- Insulated exterior walls and ceilings that meet or exceed current California standards
- Centralized heating and air-conditioning system with a digital programmable thermostat
- Water saving plumbing fixtures
- Water saving tankless water heater
- Solar panels

OPTIONAL FEATURES

- Combo tub & shower in the master bath
- Cabinets in Linen and Laundry Room
- Garage man door
- Upgraded granite and quartz kitchen countertops
- Security system, home networking, home theater systems
- Patio options*
- Room options*

* Per plan



DIAMOND RIDGE

13014 Woodhill Street
Victorville, CA 92392

909-815-1047

Sales Tour Daily: 9:30 am to 5 pm
Wed: Call for Availability



06-2021 Prices, terms, availability, promotions, features, options, amenities, floor plans, elevations, designs, materials, square footages, association fees (if any) and descriptions are subject to change without notice and may vary by unit and/or location. Seller reserves the right to make modifications, revisions and changes to features, specifications, plans, elevations and pricing without notice and or obligation as it deems desirable in its sole and absolute discretion. Prices shown refer to the base house and do not include any optional features, upgrades, lot premiums, upgraded exterior elevations, or association fees. Square footages are approximate and may vary in construction. Optional items may not be available, depending on stage of construction.

All Real Estate advertised is subject to the Fair Housing Act, which prohibits discrimination in the sale, rental and financing of housing related transactions based on race, color, national origin, religion, sex, familial status or disability. If you think your rights have been violated, the Housing Discrimination Complaint Form is available at www.hud.gov or call HUD office toll free at (800) 347-3739. All renderings, floor plans and maps are artist conceptions and are not intended to be an actual depiction of the homes, fencing, walks, driveways or landscaping, and are not necessarily to scale. Buyer shall verify all information before close of escrow. Frontier Brokers, Inc. is the real estate brokerage, California BRE License #01916671.