

ASHER  RANCH II





STYLISH LIVING WITH CHOICES IN DELIGHTFUL AND VERSATILE HOME DESIGNS

Beautiful architectural detail reveals open living spaciousness with large family rooms, eating nooks and bright, airy kitchens. Serving as the perfect retreat, elegant master suites feature double vanities, separate shower and a soaking tub. Large homesites provide wonderful opportunities for outdoor fun, or take advantage of the high desert's wide open spaces. Located in Antelope Valley's city of Rosamond, enjoy easy freeway access, close proximity to employment centers and minutes to Edwards Air Force Base.

01

RESIDENCE FLOORPLAN

1,820 Sq. Ft.

One-Story

3 Bedrooms

2 Baths

Den

2-Car Garage

.....

Options:

Bedroom 4

Fireplace



SPANISH



TRADITIONAL



CRAFTSMAN

01

RESIDENCE FLOORPLAN

1,820 Sq. Ft.

One-Story

3 Bedrooms

2 Baths

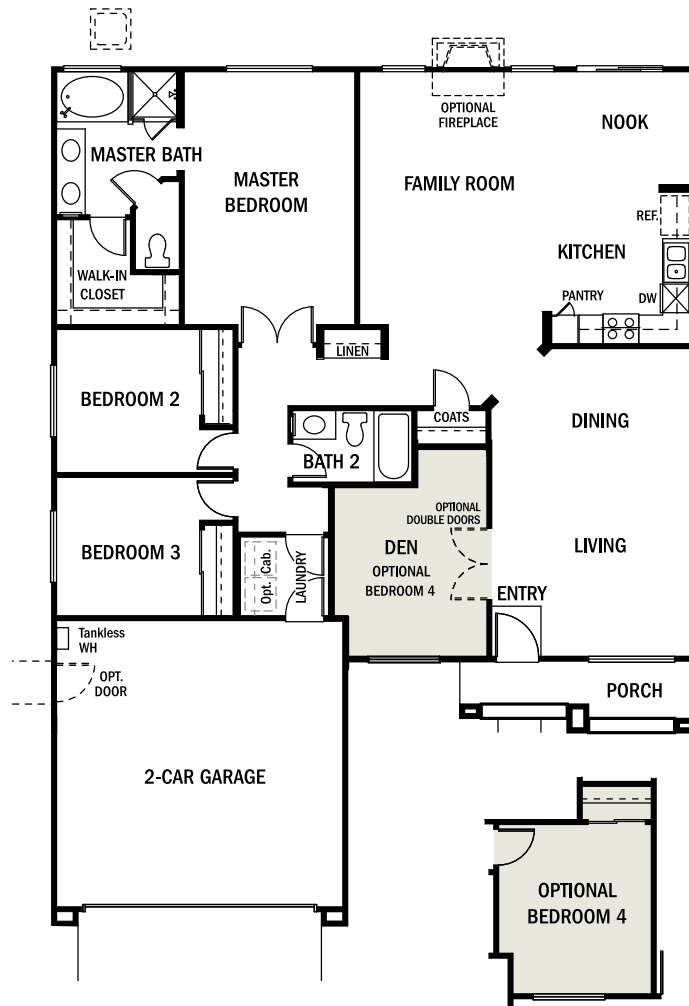
Den

2-Car Garage

Options:

Bedroom 4

Fireplace



FIRST STORY

02

RESIDENCE FLOORPLAN

2,202 Sq. Ft.

Two-Story

3 Bedrooms

2.5 Baths

2-Car Garage

.....

Options:

Bedroom 4

Fireplace



2A

SPANISH



2B

TRADITIONAL



2C

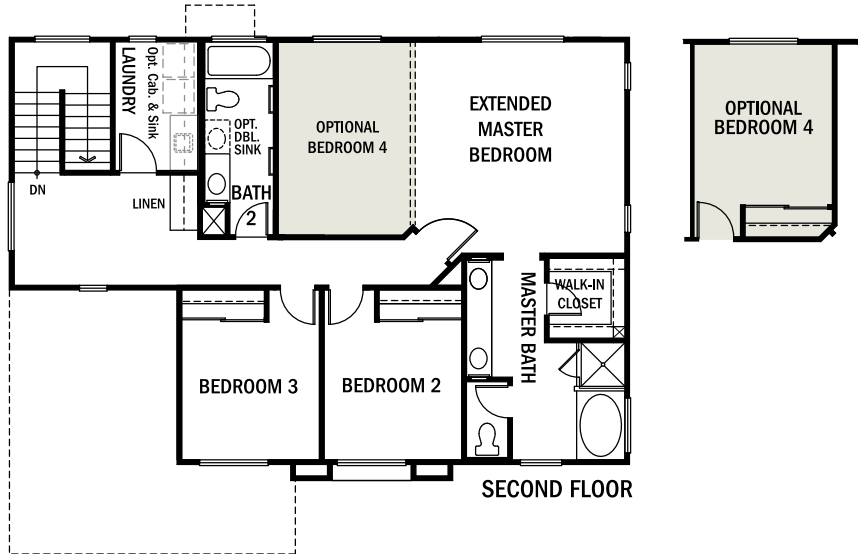
CRAFTSMAN

02

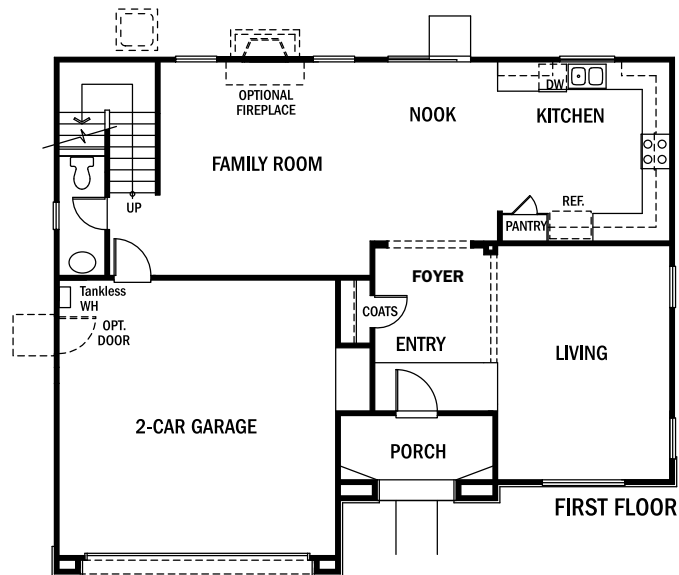
RESIDENCE FLOORPLAN

2,202 Sq. Ft.
Two-Story
3 Bedrooms
2.5 Baths
2-Car Garage

Options:
Bedroom 4
Fireplace



SECOND STORY



FIRST STORY

03

RESIDENCE FLOORPLAN

2,457 Sq. Ft.

Two-Story

3 Bedrooms

2.5 Baths

Den

2-Car Garage

.....

Options:

Bedroom 4

Bedroom 5/Bath 3

Fireplace



SPANISH



TRADITIONAL



CRAFTSMAN

03

RESIDENCE FLOORPLAN

2,457 Sq. Ft.

Two-Story

3 Bedrooms

2.5 Baths

Den

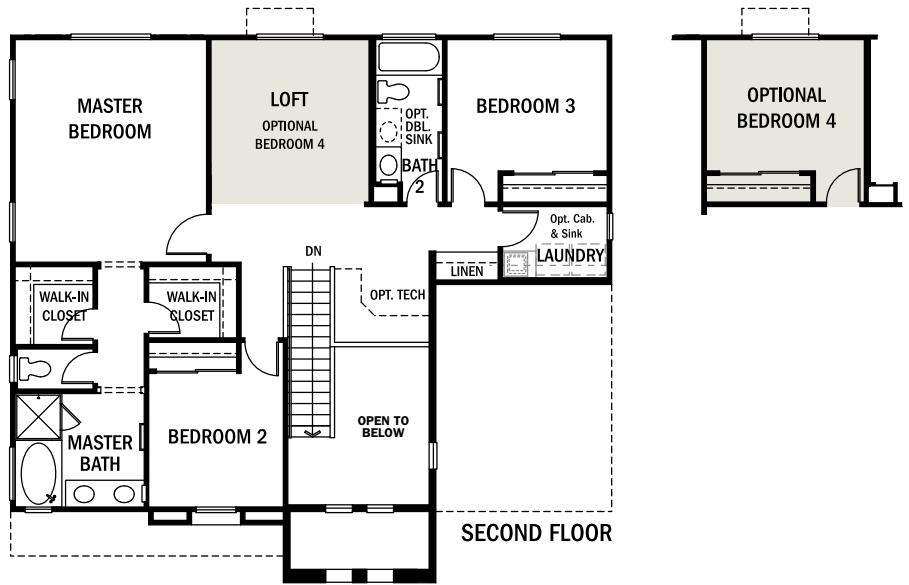
2-Car Garage

Options:

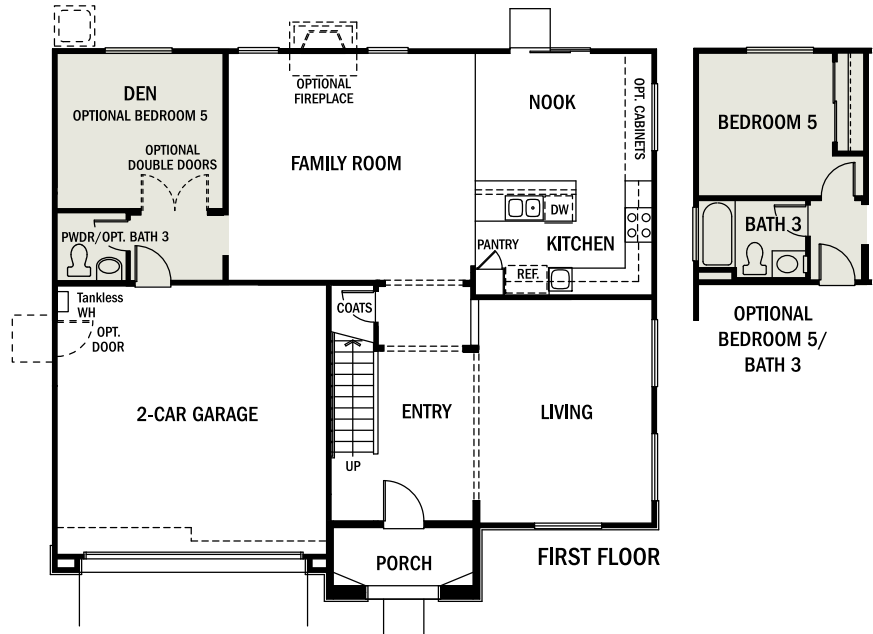
Bedroom 4

Bedroom 5/Bath 3

Fireplace



SECOND STORY



FIRST STORY



ASHER RANCH II

3519 Half Dome Avenue
Rosamond, CA 93560

661.221.3905

Sales Tour Daily: 9:30 am to 5 pm
Wed: Call for Availability



FRONTIERHOMES.COM



2-19-19 Prices, terms, availability, promotions, features, options, amenities, floor plans, elevations, designs, materials, square footages, association fees (if any) and descriptions are subject to change without notice and may vary by unit and/or location. Seller reserves the right to make modifications, revisions and changes to features, specifications, plans, elevations and pricing without notice and or obligation as it deems desirable in its sole and absolute discretion. Prices shown refer to the base house and do not include any optional features, upgrades, lot premiums, upgraded exterior elevations, or association fees. Square footages are approximate and may vary in construction. Optional items may not be available, depending on stage of construction.

All Real Estate advertised is subject to the Fair Housing Act, which prohibits discrimination in the sale, rental and financing of housing related transactions based on race, color, national origin, religion, sex, familial status or disability. If you think your rights have been violated, the Housing Discrimination Complaint Form is available at www.hud.gov or call HUD office toll free at (800) 347-3739. All renderings, floor plans and maps are artist conceptions and are not intended to be an actual depiction of the homes, fencing, walks, driveways or landscaping, and are not necessarily to scale. Buyer shall verify all information before close of escrow. Frontier Brokers, Inc. is the real estate brokerage, California BRE License #01916671.